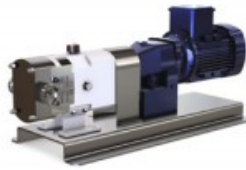


Configurations



With bare shafts



With geared motor and coupling mounted on stainless steel base frame



With stainless steel motor shroud



Rectangular inlet



With vertical ports

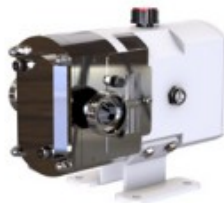


Pressure Relief valve

Positive displacement rotary lobe pumps will continue to build up pressure when operating against a closed valve.

With this in mind, it is very important to add in safety device to prevent accidental over-pressurization and subsequent damage to the pump or system.

SLA pumps can be equipped with an integrated pressure relief valve to avoid these damages. Design and cleanability.

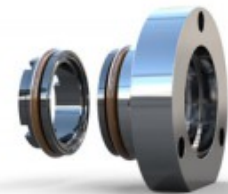


Heating Jackets

Heating jackets are available for all pump sizes. This option makes it possible to heat the pump chamber and to ensure that products which solidify at ambient temperature are kept liquid.

Alternatively, the heating jackets for SLA are available for the rotor case and the front cover.

Due to the integrated design in the pump, it is a highly efficient system without any compromise in the hygienic design and cleanability.



Mechanical Seals

Single Mechanical Seal
Double Mechanical Seal
Flushing
Sic/Sic/EPDM or Viton
Tungsten/Tungsten/EPDM or Viton
Knife-Edge
Gaskets-EPDM, Viton, NBR, Kalrez,
PTFE FEP