

SLA Rotary Lobe Pump



Application

SLA range of rotary lobe pumps combines cost effective simplicity and easy maintenance with TMX quality and reliability.

SLA range has been developed for general applications within the Dairy, Beverage, Food, home, chemical and personal care industries.

Fully with CIP cleanable. This pump is also perfect for handling any liquid with low or high viscosity. When it comes to filtration and bottling applications. Products containing brittle solids such as curd .

Thanks to specially designed lobes, it can be pumped without damage. Easy inspection or replacement without the need for pipework disassembly.

SLA pump is a bare shaft rotary lobe pump. It is made of a stainless steel.

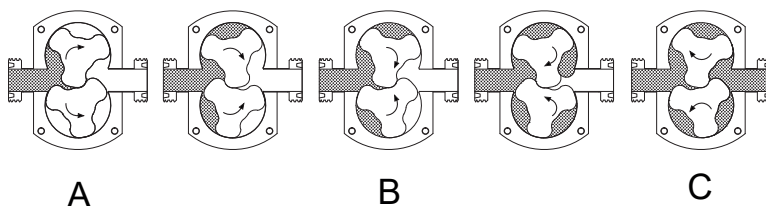
Pump casing and cover, and two-lobe rotors with sanitary attachment.

SLA rotary lobe pump is provided with an internal mechanical seal approved EHEDG. The seal is balanced and has a hygienic design. When required, other materials can be used.

SLA pump range is compact, efficient and capable of flow rates up to 122m³/h and pressures up to 12 bar.

Operation

The positive displacement of the Series SLA pump is provided by non-contacting, contra-rotating two or tri-lobe rotors within a fully swept pump chamber.



User Benefits

- High efficiency
- Low energy consumption
- Compact size
- Smooth flow
- Reversible operation
- Low shear pumping
- Minimal pumped media agitation
- Easy maintenance
- Hygienic design

Tecnical Specification

Materials

Pump Head Housing.....	AISI 316L
Gaskets.....	EPDM or FPM
Gear Box.....	GG25
Shafts.....	Duplex Stainless Steel
Shaft Seal.....	Single,Double Mechanical Seal
Surface Finish.....	Ra<0,8 µm
Connections.....	DIN 11851, SMS, ISO, Clamp
Base Plate	Stainless Steel
Coupling Guard.....	Stainless Steel

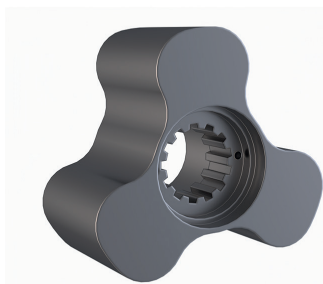
Operating Limits

Maximum flow	122m ³ /h
Maximum differential pressure	12 bar
Maximum working pressure.....	12 bar
Temperature range (EPDM)	-10 °C to +120 °C
Temperature CIP, max. 30 min.....	+140 °C
Maximum speed.....	950 rpm

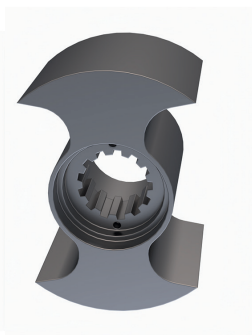
Operating Data

Model	Tri-Lobe max(m ³ /h)	Bi-Wing max(m ³ /h)	Max Bar	Tri-Lobe Volume at 100 rpm/lt	Bi-Wing Volume at 100 rpm/lt	Max Speed (rpm)
SLA+ A-25	7,98	9,12	12bar	14	16	950
SLA+ A-40	8,55	9,69	12bar	15	17	950
SLA+ A-50	10,83	12,54	10bar	19	22	950
SLA+ B-40	15,96	18,81	12bar	28	33	950
SLA+ B-50	19,38	23,37	10bar	34	41	950
SLA+ B-65	25,08	30,21	10bar	44	53	950
SLA+ C-65	30,24	36,72	12bar	70	85	720
SLA+ C-80	35,85	43,2	10bar	83	100	720
SLA+ C-100	43,63	53,13	10bar	101	123	720
SLA+ D-100	72,36	79,2	8bar	201	220	600
SLA+ D-125	90	98,64	8bar	250	274	600
SLA+ D-150	107,28	117,72	8bar	298	327	600

Lobes Type



Tri-Lobe



Bi-Wing

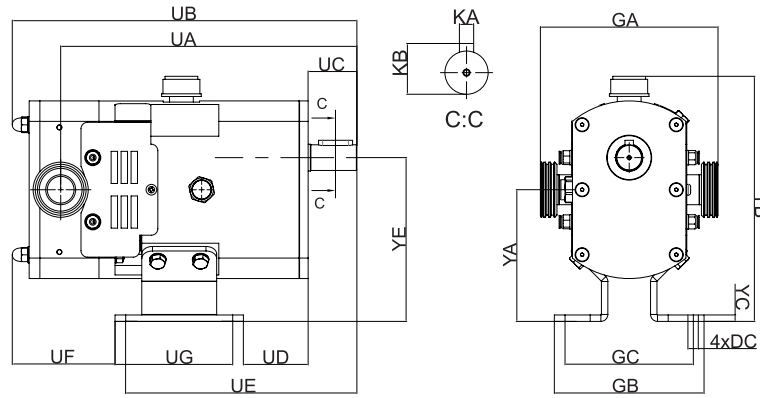
SLA rotary lobe pumps basically consist of two lobe rotors which rotate synchronously inside a casing without touching each other.

As the rotors rotate, the spaces between the lobes and the casing are filled with the product, which is transported to the discharge nozzle with a fixed amount of displacement

The pumped fluid forms a continuous stream thanks to the tolerances between the lobes and the pump casing, thus ensuring an efficient pumping.

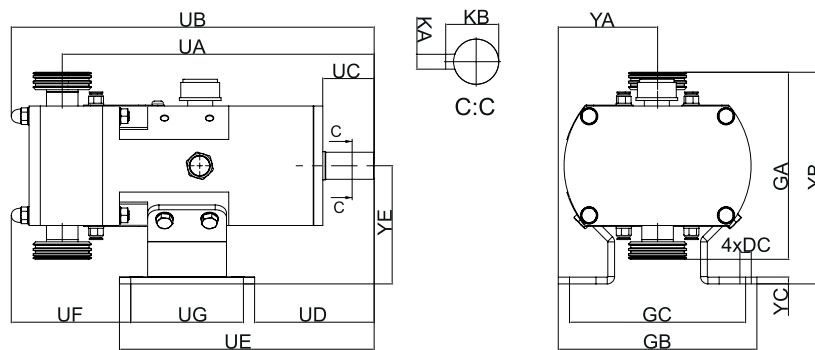
Dimensions

Horizontal Dimensions



TYPE	UA	UB	UC	UD	UE	UF	UG	GA	GB	GC	YA	YB	YC	YE	KA	KB	DC
SLA+A 25	277	322				96		166									
SLA+A 40	277	326	45	60	212	100	90	174	140	100	123	229	6	150	8	28,3	12
SLA+A 50	283	338				112		175									
SLA+B 40	327	385				98		195									
SLA+B 50	333	395	55	72	268	108	120	198	163	133	138	262	6	175	8	31	14
SLA+B 65	341	412				124		209									
SLA+C 65	424	504				136		244									
SLA+C 80	432	517	79	90	343	149	150	254	194	154	176	327	8	224	10	42	16
SLA+C 100	442	536				168		272									
SLA+D 100	525	627				184		313									
SLA+D 125	539	653	103	120	417	211	170	323	213	173	220	405	12	280	14	48,5	16
SLA+D 150	552	687				235		343									

Vertical Dimensions



TYPE	UA	UB	UC	UD	UE	UF	UG	GA	GB	GC	YA	YB	YC	YE	KA	KB	DC
SLA+A 25	277	322				96		166				187					
SLA+A 40	277	326	45	60	212	100	90	174	176	146	88	191	6	105	8	28,3	12
SLA+A 50	283	338				112		175				197					
SLA+B 40	327	385				98		195				219					
SLA+B 50	333	395	55	72	268	108	120	198	196	166	98	220	6	121	8	31	14
SLA+B 65	341	412				124		209				226					
SLA+C 65	424	504				136		244				275					
SLA+C 80	432	517	79	90	343	149	150	254	236	196	118	280	8	154	10	42	16
SLA+C 100	442	536				168		272				290					
SLA+D 100	525	627				184		313				357					
SLA+D 125	539	653	103	120	417	211	170	323	254	214	127	361	12	200	14	48,5	16
SLA+D 150	552	687				235		343				371					